

# Lassen National Forest

## Discussion Draft

### Storie NW



Jul 13, 2007

### System Roads and Trails

- Current Operational Maintenance Level**
- 0 - Not Maintained by FS, NO Public Right-of-Way
  - - - 1 - BASIC CUSTODIAL CARE (CLOSED TO ALL TYPES OF MOTOR VEHICLES)
  - 2 - HIGH CLEARANCE VEHICLES, Open to All Vehicles
  - 3/4/5 - Open to Street-Legal Vehicles Only
  - Roads Already Decommissioned
  - Roads Planned to be Decommissioned under other NEPA
  - NF System Trails - Open to Motorized Vehicle Use
  - NON-MOTORIZED TRAIL

- COUNTY ROAD Open to Street-Legal Vehicles Only
- STATE HIGHWAY Open to Street-Legal Vehicles Only

### Proposed Designation

- OHV Trails Considered, Not Proposed
- Small Areas Open to Motorized Vehicle Use

For complete proposal symbology, see supplemental legend

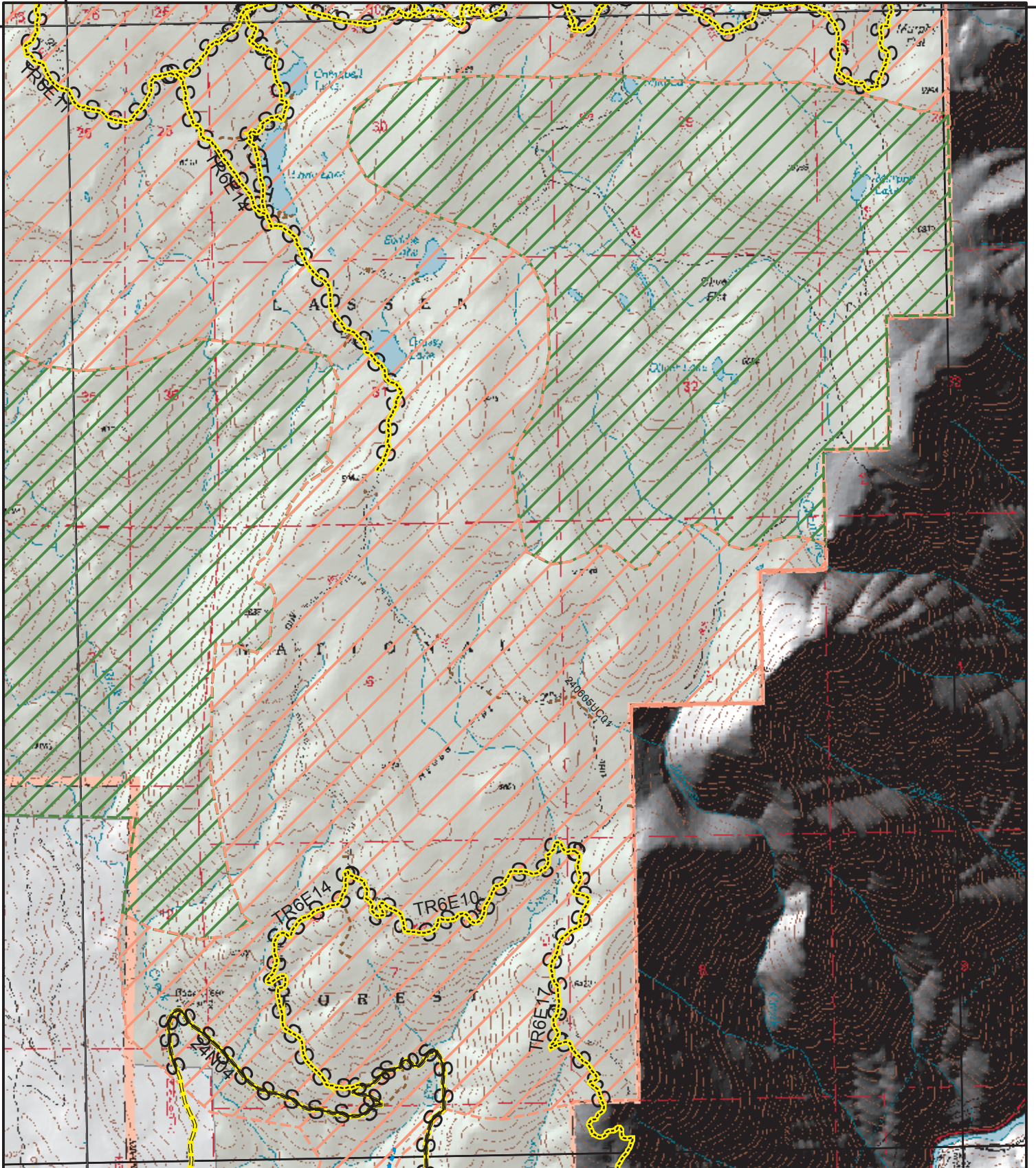
### Planning Areas

- RESTRICTED to Designated Routes only
- PROHIBITED



40°00'N

40°00'N



121°22'30"W