

Lassen National Forest Discussion Draft Kimshew Point NE



Jul 13, 2007

System Roads and Trails

Current Operational Maintenance Level

- 0 - Not Maintained by FS, NO Public Right-of-Way
- - - 1 - BASIC CUSTODIAL CARE (CLOSED to ALL TYPES OF MOTOR VEHICLES)
- 2 - HIGH CLEARANCE VEHICLES, Open to All Vehicles
- 3/4/5 - Open to Street-Legal Vehicles Only
- Roads Already Decommissioned
- Roads Planned to be Decommissioned under other NEPA
- NF System Trails - Open to Motorized Vehicle Use
- NON-MOTORIZED TRAIL

- COUNTY ROAD Open to Street-Legal Vehicles Only
- STATE HIGHWAY Open to Street-Legal Vehicles Only

Proposed Designation

- OHV Trails Considered, Not Proposed
- Small Areas Open to Motorized Vehicle Use

For complete proposal symbology, see supplemental legend

Planning Areas

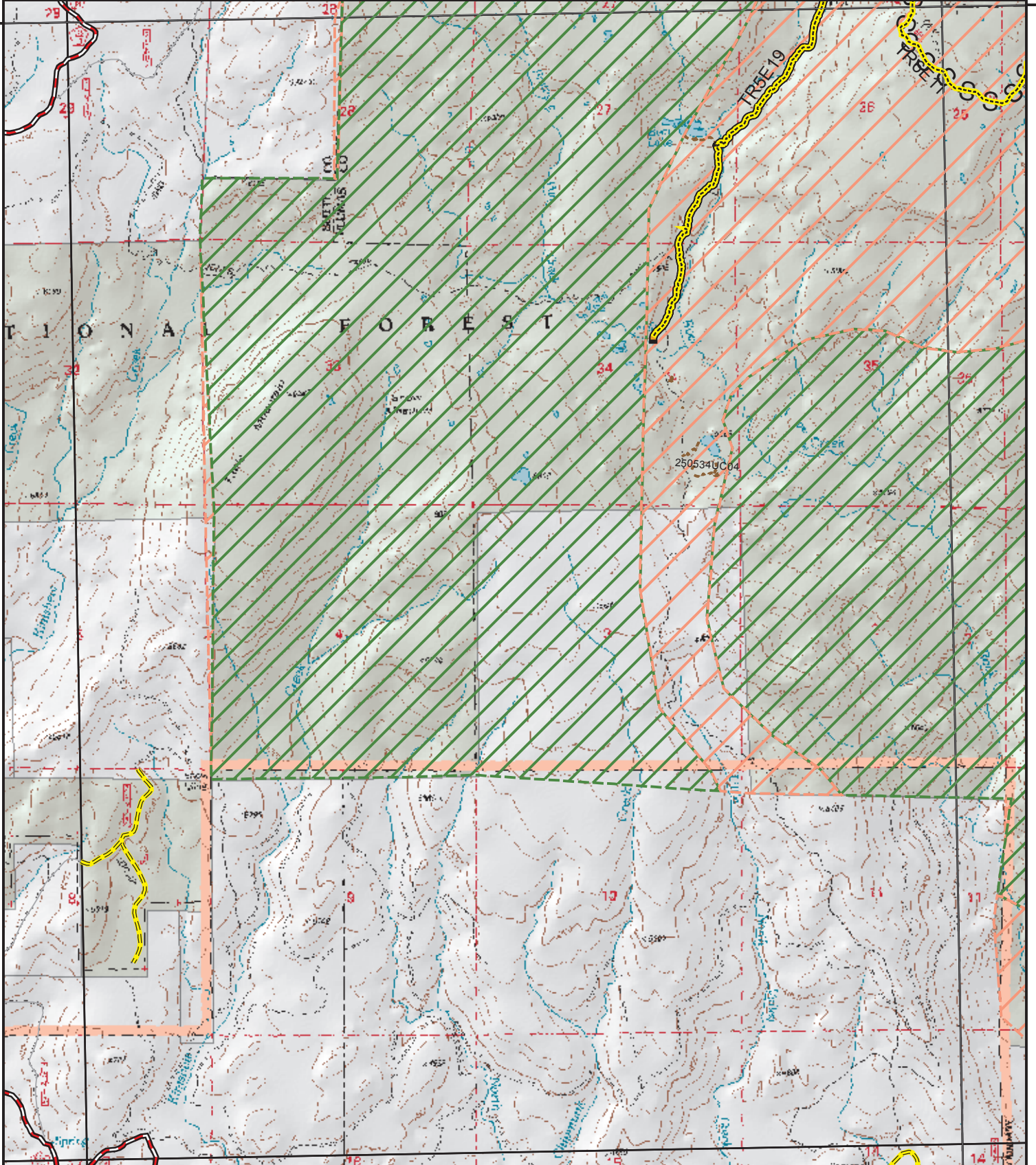
- RESTRICTED to Designated Routes only
- PROHIBITED

LAND OWNERSHIP

- National Forest Land



40°00'N



40°00'N

121°22'30"W

121°22'30"W